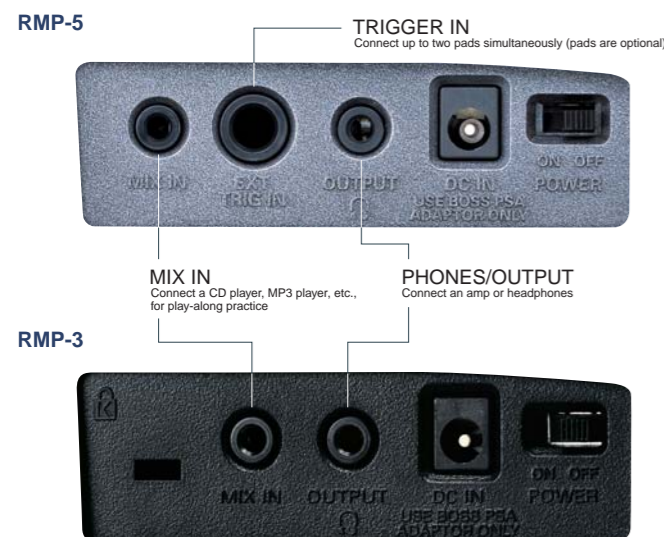


Advanced Rhythm Trainers
Make Learning Fast & Fun!

RHYTHM COACH RMP-Series

Side View



RMP-5 Pad Instruments

Snare 1 Vintage	Hi-Hat Close	Surdo Open	Shaker
Snare 2 Brass	Hi-Hat Open	Surdo Mute	Wood Block Hi
Snare 3 Bright	Hi-Hat Close/Open	Surdo Mute/Open	Wood Block Lo
Snare 4 Funk	Elec. Hi-Hat Close	Caixa	Wood Block Lo/Hi
Snare 5 Piccolo	Elec. Hi-Hat Open	Agogo Hi	Claves
Snare 6 Marching	Elec. Hi-Hat Close/Open	Agogo Lo	Snare Cross Stick
Practice Board	Ride Cymbal Bow	Agogo Lo/Hi	Snare 6 Marching Rim
Elec. Snare 1	Ride Cymbal Bow/Bell	Triangle Open	Snare 1 head sound only
Elec. Snare 2	Splash	Triangle Mute	Snare 2 head sound only
Kick 1 Rock	Tom Hi	Triangle Mute/Open	Snare 3 head sound only
Kick 2 Hard	Tom Lo	Cowbell Open	Snare 4 head sound only
Kick 3 Jazz	Timbale Hi	Cowbell Mute	Snare 5 head sound only
Elec. Kick 1	Timbale Lo	Cowbell Mute/Open	
Elec. Kick 2	Timbale Paila	Tambourine	

RMP-5 Metronome Instruments

C01: Traditional Metronome	C05: Claves	C09: Finger Snap	C13: Triangle
C02: Simple Electric	C06: Sticks	C10: Hi-Hat Close	C14: Agogo
C03: Electric Beep	C07: Voice Count	C11: Hi-Hat Pedal	C15: Tambourine
C04: Cowbell	C08: Hand Clap	C12: Ride Cymbal	Ptn *

* Selecting Ptn enables selection of patterns P01-P22 for the RHYTHM (Rhythm type) parameter. Using Ptn, you can easily select the perfect metronome backing style for your workout.

RMP-5 Patterns

P01: Triangle 16th	P07: Jazz Legato Hi-Hat	P13: Wood Block & Shaker	P19: Hi-Hat Open Close 3
P02: Agogo 16th	P08: Jazz Legato Ride	P14: Agogo Triplet	P20: Hi-Hat Open Close 4
P03: Drum Simple 8 Beat	P09: Jazz Count Hi-Hat	P15: 2-3 Son Clave	P21: Hi-Hat Open Close 5
P04: Drum Simple 16 Beat	P10: Samba Kick	P16: 3-2 Rumba Clave	P22: Rock Fill
P05: Drum Shuffle	P11: Samba Surdo	P17: Hi-Hat Open Close 1	
P06: Drum Disco	P12: Simple Surdo	P18: Hi-Hat Open Close 2	

Specifications

	RMP-5	RMP-3
Pad Size	8 inches	8 inches
Pad Sounds	54 types	-
Tempo	20 - 300	20 - 260
Click Sounds	15 types	5 types
Rhythm Types	24 types	18 types
Patterns	22 types	-
Beat	24 types	24 types
Coach Mode	TIME CHECK (8 variations), QUIET COUNT (6 variations), AUTO UP/DOWN (6 variations), RHYTHMIC NOTES (3 variations), STROKE BALANCE (2 variations), ACCURACY SCORE (4 variations)	TIME CHECK (4 variations), QUIET COUNT (6 variations), AUTO UP/DOWN (5 variations), RHYTHMIC NOTES (3 variations), STROKE BALANCE (2 variations)
Connectors	PHONES/OUTPUT Jack: 1 (Stereo miniature phone type), MIX IN Jack: 1 (Miniature phone type), AC Adaptor Jack, EXT TRIG IN Jack: 1 (Dual) * Using the PCS-31L, you can connect two pads. In that case, the rim shot, edge shot, and choking features are unavailable.	PHONES/OUTPUT Jack: 1 (Stereo miniature phone type), MIX IN Jack: 1 (Miniature phone type), AC Adaptor Jack
Power Supply	DC 9 V: Dry Battery 6LR61/1604A (9 V) type (alkaline), AC Adaptor	DC 9 V: Dry Battery 6F22/1604 (9 V) type (carbon), Dry Battery 6LR61/1604A (9 V) type (alkaline), AC Adaptor
Current Draw	80 mA * Expected battery life under continuous use: Carbon: 1 hour, Alkaline: 4 hours, These figures will vary depending on the actual conditions of use.	55 mA * Expected battery life under continuous use: Carbon: 2 hours, Alkaline: 6 hours, These figures will vary depending on the actual conditions of use.
Stand Screw Size	M8	M8
Dimensions	263 (W) x 348 (D) x 78 (H) mm, 10-3/8 (W) x 13-3/4 (D) x 3-1/8 (H) inches	263 (W) x 348 (D) x 78 (H) mm, 10-3/8 (W) x 13-3/4 (D) x 3-1/8 (H) inches
Weight	1.3 kg / 2 lbs 14 oz (including a battery)	1.2 kg / 2 lbs 11 oz (including a battery)
Accessories	Dry Battery 6LR61/1604A (9 V) type (alkaline), Tuning Key, Owner's Manual	Dry Battery 6F22/1604 (9 V) type (carbon), Tuning Key, Owner's Manual, Leaflet ("USING THE UNIT SAFELY" and "IMPORTANT NOTES")

Options

For RMP-5 / RMP-3

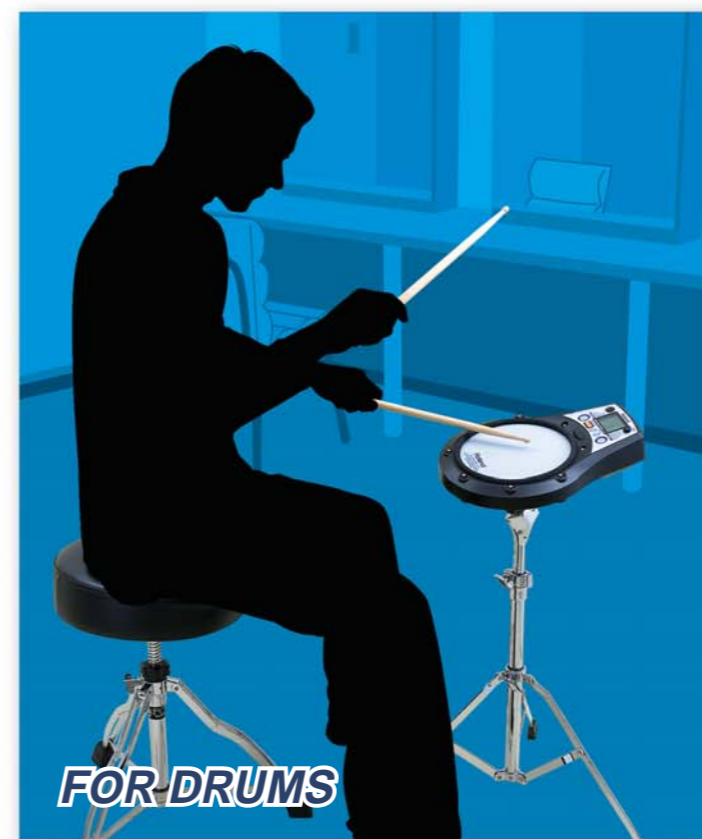


For RMP-5



* Kick pedal and Beater not included.

* Kick pedal not included.



The Self-Contained Rhythmic Workout Station

RHYTHM COACH RMP-Series

Put yourself on the fast track to rhythmic improvement with the RMP-3 and RMP-5. These state-of-the-art electronic rhythm pads look good, feel good, and are loaded with fun exercises and timekeeping tools to build your chops. With tunable mesh drumheads, built-in metronomes, large LCDs, renowned Roland Rhythm Coach interactive lessons, and integrated one-piece molded bodies, the RMP-series offers the utmost in portability and convenience.



Flagship Rhythm Coach With Built-in Sounds **PCM SOUND**
RHYTHM COACH **RMP-5**

Quiet, comfortable, adjustable 8" mesh head

Built-in Rhythm Coach training features and metronome

Large easy-to-read LCD with a smooth-flow tempo meter

Mix In jack for playing along with external audio (CD players, etc.)

Dedicated Rhythm Trainer

RHYTHM COACH **RMP-3**



Comfortable, Quiet Mesh Head

The RMP-series pads are outfitted with a great-feeling, tunable mesh drumhead for realistic and quiet performance. Just like on an acoustic drum, the RMP's head can be adjusted for tension. The result is a true acoustic feel, but without the noise. By plugging in headphones, drummers can enjoy silent, concentrated practice without disturbing others.

Fun, Friendly Features

The large LCD provides easy-to-read instructional information, complete with a smooth-flow onscreen tempo meter that bounces from side to side. Large buttons and a clearly labeled front panel simplify operation. Each RMP has a built-in speaker for the metronome sounds, and a Mix In jack for playing along with external audio. Use the RMP on your lap, a tabletop, or best of all, with Roland's convenient PDS-2 stand (optional).

Convenience and Portability

Since the metronome, Rhythm Coach, and drum pad are combined into one molded unit — and thanks to the convenient battery-powered operation — the RMP-series pads are great to take with you on the road. Practice anywhere, anytime, in comfort and privacy.

Expanded Features with the RMP-5

Great Sounds Onboard!

Breaking the boundaries of pre-existing practice pads, the new RMP-5 includes 54 of Roland's finest snare, kick, hi-hat, cymbal, and percussion sounds for you to play. It also provides an assortment of metronome sounds, including a standard click, human-voice count, rhythmic patterns, and more.

Connect Kick & Cymbal Pads

The RMP-5 provides a dual-trigger input that can be used to connect a Roland kick trigger and a cymbal pad, such as the KD-8, CY-8, etc (optional). All together, these three components form the nucleus of a small electronic drum kit. Now you can train not only your hands, but your feet as well.



With an optional kick and a cymbal pad connected to the RMP-5, you can build your own custom drum kit by assigning which internal sound you'd like to play on each pad.

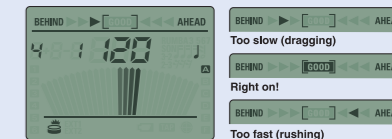
Your Own Personal Rhythm Coach Included

The RMP-series is equipped with Roland's famous Rhythm Coach exercises, which challenge and score your playing in fun and friendly ways. Put your skills to the test with Time Check, Auto Up/Down, and Stroke Balance, for example, to help develop consistent stick technique. Adjust the workout level according to your abilities and goals.



TIME CHECK

In sync with the metronome, this exercise encourages you to strike with accuracy. The display informs how accurate your shot was in seven levels.



STROKE BALANCE

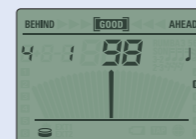
The onscreen metronome needle indicates how strong you play. Improve balance and accent skills for both hands.



ACCURACY SCORE

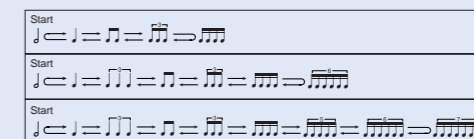
Chart your progress! With each Time Check exercise, the RMP grades your performance (for durations of 4, 8, 16, or 32 measures), and displays your accuracy from 0-100 percent.

*Available on RMP-5 only. On RMP-3, this function is available for performances of 8 measures in Time Check mode.



RHYTHMIC NOTES

This provides basic training by changing the rhythm type every two measures. Useful for warm-up, this exercise helps you master various note values.



QUIET COUNT

Designed to develop your internal tempo, this exercise alternates the volume level between normal and barely audible, challenging you to maintain the correct tempo throughout.

AUTO UP/DOWN

An endurance exercise that gradually increases and then decreases the click speed. The rate at which the tempo goes up and down is adjustable, and you can set the maximum tempo at which it starts decreasing.